

## Anti- E-cadherin antibody

### Description

**Product Name:** Anti- E-cadherin antibody

**Size:** 100 µg

**Form:** liquid

**Purification:** protein A+G purified

**Purity:** ≥95% as determined by SDS-PAGE

**Host:** Mouse

**Clonality:** monoclonal

**Isotype:** IgG2b

**Storage:** PBS with 0.02% sodium azide and 50% glycerol pH 7.3, -20°C for 12 months (Avoid repeated freeze / thaw cycles.)

### BACKGROUND

This gene encodes a classical cadherin of the cadherin superfamily. Alternative splicing results in multiple transcript variants, at least one of which encodes a preproprotein that is proteolytically processed to generate the mature glycoprotein. This calcium-dependent cell-cell adhesion protein is comprised of five extracellular cadherin repeats, a transmembrane region and a highly conserved cytoplasmic tail. Mutations in this gene are correlated with gastric, breast, colorectal, thyroid and ovarian cancer. Loss of function of this gene is thought to contribute to cancer progression by increasing proliferation, invasion, and/or metastasis. The ectodomain of this protein mediates bacterial adhesion to mammalian cells and the cytoplasmic domain is required for internalization. This gene is present in a gene cluster with other members of the cadherin family on chromosome 16.

### IMMUNOGEN INFORMATION

**Immunogen:** cadherin 1, type 1, E-cadherin (epithelial)

**Synonyms:** Arc 1, Cadherin 1, CD324, CDH1, CDHE, E cadherin, ECAD, E-cadherin, LCAM, UVO, Uvomorulin

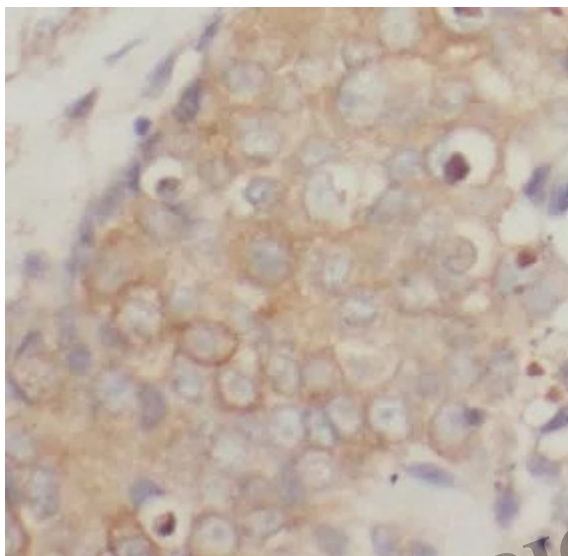
**Observed MW:** 130 kDa

### APPLICATION

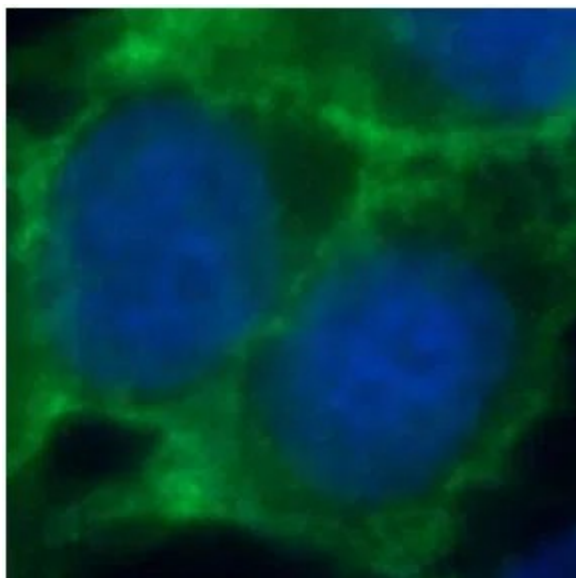
**Tested Application:** ELISA, IHC, WB, IF

**Recommended Dilution:** WB: 1:1000-1:5000; IHC: 1:500-1:2000; IF: 1:50-1:500

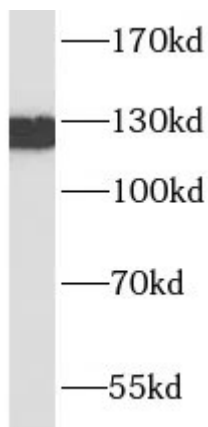
## IMAGES



Immunohistochemistry of paraffin-embedded human breast cancer tissue slide using FNab10112( E-cadherin Antibody) at dilution of 1:1000



Immunofluorescent analysis of A431 cells using FNab10112( E-cadherin Antibody) at dilution of 1:50 and Alexa Fluor 488-conjugated Goat Anti-Rabbit IgG(H+L)



A431 cells were subjected to SDS PAGE followed by western blot with FNab10112(E-cadherin antibody) at dilution of 1:3000

**Date Created**

2024/07/01

LINK BIOTECH