

anti- Angiotensinogen antibody

Description

Size: 100 µg

Form: liquid

Purification: Immunogen affinity purified

Purity: ≥95% as determined by SDS-PAGE

Clonality: polyclonal

Storage: PBS with 0.02% sodium azide and 50% glycerol pH 7.3, -20°C for 12 months (Avoid repeated freeze / thaw cycles.)

BACKGROUND

Angiotensinogen is a precursor of angiotensin II (Ang II), is expressed and synthesized largely in the liver and is cleaved by the enzyme renin in response to lowered blood pressure. It has a key role in mediating vascular constriction and regulating salt and fluid homeostasis. The resulting product, angiotensin I, is then cleaved by angiotensin converting enzyme (ACE) to generate the physiologically active enzyme angiotensin II. Mutations in this gene are associated with susceptibility to essential hypertension, and can cause renal tubular dysgenesis, a severe disorder of renal tubular development. Defects in this gene have also been associated with non-familial structural atrial fibrillation, and inflammatory bowel disease.

IMMUNOGEN INFORMATION

Immunogen: angiotensinogen (serpin peptidase inhibitor, clade A, member 8)

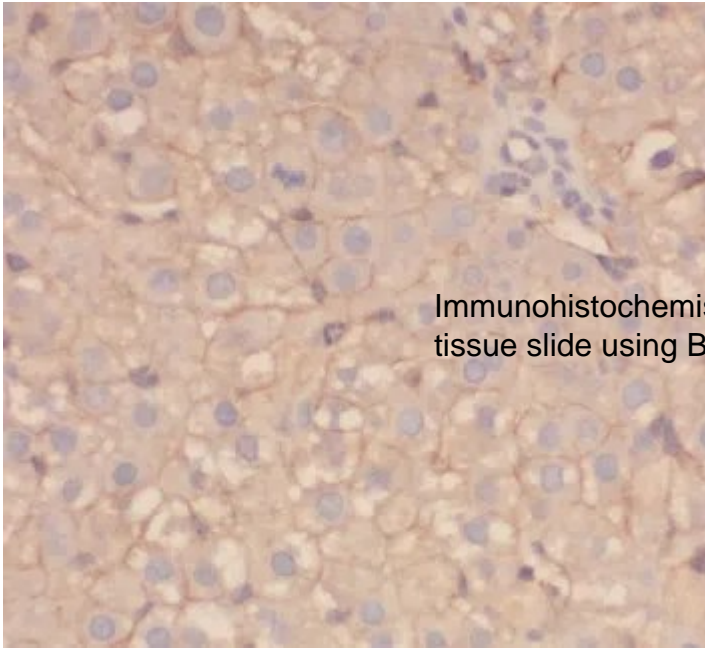
Synonyms: AGT, Ang I Angiotensin 2, Ang II Angiotensin 3, Ang III, Angiotensin I, Angiotensin II, Angiotensin III, Angiotensinogen, ANHU, Des Asp[1] angiotensin II, FLJ92595, FLJ97926, Serpin A8, SERPINA8

Observed MW: 53 kDa

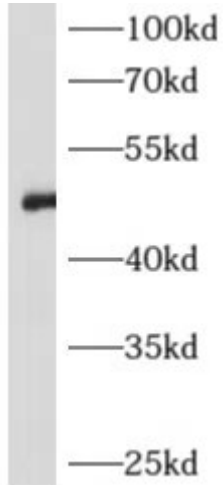
APPLICATION

Tested Application: ELISA, WB, IF, IHC

Recommended Dilution: WB :1:500-1:5000; IHC: 1:20-1:200; IF: 1:10-1:100



Immunohistochemistry of paraffin-embedded human hepatocirrhosis tissue slide using BS-49300BANF (AGT Antibody) at dilution of 1:50



human plasma tissue were subjected to SDS PAGE followed by western blot with BS-49300BANF (AGT antibody) at dilution of 1:1000

Date Created
2024/07/01