

anti- ACE2 antibody

Description

Size: 100 µg

Form: liquid

Purification: Immunogen affinity purified

Purity: ≥95% as determined by SDS-PAGE

Clonality: polyclonal

Storage: PBS with 0.02% sodium azide and 50% glycerol pH 7.3, -20°C for 12 months (Avoid repeated freeze / thaw cycles.)

BACKGROUND

Carboxypeptidase which converts angiotensin I to angiotensin 1-9, a peptide of unknown function, and angiotensin II to angiotensin 1-7, a vasodilator. Also able to hydrolyze apelin-13 and dynorphin-13 with high efficiency. May be an important regulator of heart function. (Microbial infection) Acts as a receptor for SARS coronavirus/SARS-CoV and human coronavirus NL63/HCoV-NL63.

IMMUNOGEN INFORMATION

Immunogen: angiotensin I converting enzyme (peptidyl-dipeptidase A) 2

Synonyms: ACE related carboxypeptidase, ACE2, ACEH, Angiotensin converting enzyme 2, DKFZp434A014, Metalloprotease MPROT15

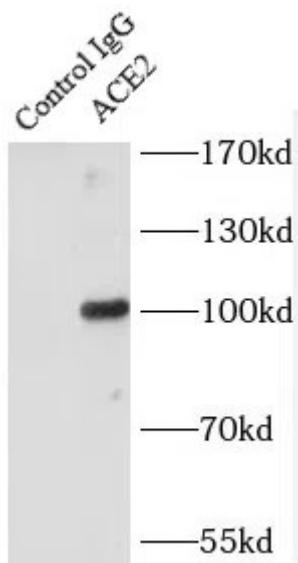
Observed MW: 92 kDa

APPLICATION

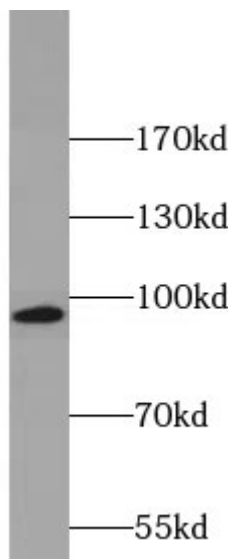
Tested Application: ELISA, WB, IHC, IP

Recommended Dilution: WB: 1:500-1:2000; IP: 1:500-1:2000; IHC: 1:500-1:2000

IMAGES



IP Result of anti-ACE2 (IP:BS-18000BANF, 5ug;Detection:BS-18000BANF 1:1000) with mouse kidneytissue lysate 4000ug.



mouse kidney tissue were subjected to SDS PAGE followed by western blot with BS-18000BANF(ACE2 antibody) at dilution of 1:1000

Date Created
2024/07/01